

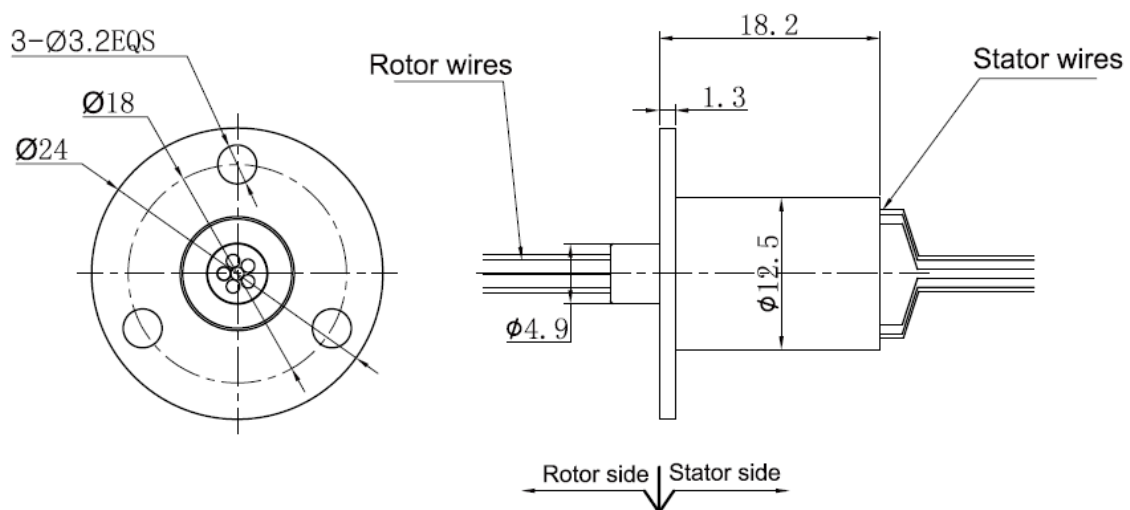


CTC012-06S slip rings are small and compact with OD 12.5mm * L 18.2mm, standard, off-the-shelf. Color-coded lead wires are used on both the stator and rotor for simplified electrical connections. Using a 90° V-groove ring design for each ring. CTC012-06I is the high-end version corresponding to CTC012-06S, It has higher performance and longer working life, higher speed rotating speed, low noise.

Technical Data

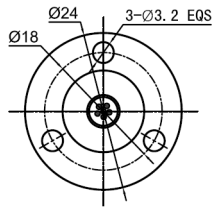
Modele	Lenght	OD	Circuits	
	mm	mm	1A/Signals	Total Wires
CTC012S-00P/06S	18,2	12,5	6	6

DRAWING

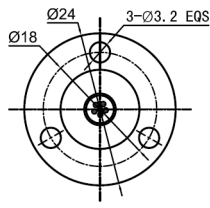


Dimensions in mm

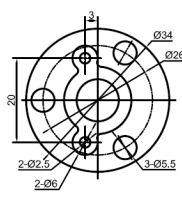
FLANGES



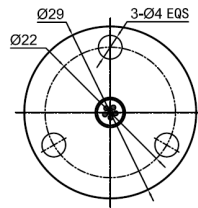
01



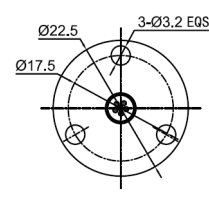
02



03



04



05

LEAD WIRES COLOR CODE

Ring Color	1	2	3	4	5	6
Color	BLK	RED	YEL	GRN	BLU	WHT

SPECIFICATIONS

ELECTRICAL DATA

Parameter	Power	Signal
Rated Voltage	0~240VAC/VDC	0~240VAC/VDC
Insulation Resistance	≥100MΩ/500VDC	≥100MΩ/500VDC
Lead Wires	AWG28#Teflon	AWG28#Teflon
Lead Length	Standard 300mm (adjustable)	
Insulation Strength	500VAC@50Hz, 60s	
Electrical Noise	<0,01Ω	

MECHANICAL DATA

Parameter	Value
Working Life	See Product Quality Level Table
Rotating Speed	See Product Quality Level Table
Working Temperature	-30°C~80°C
Operating Humidity	0~85% RH
Contact Material	See Product Quality Level Table
Housing Material	See Product Quality Level Table
Torque	0,05Nm; +0,02Nm/6rings
Protection Grade	IP51

PRODUCT QUALITY LEVEL TABLE

Products Level Code	Max Rotating Speed	Working Life	Housing Material	Electrical Noise①@10RPM
S	250RPM	>10 Million Revs	Plastics	10mΩ
I	1000RPM	>30 Million Revs	Plastics	4mΩ

PART NUMBER COMPOSITION

CTC 022S - xxP/yyS - 00000 - XXXXX

①

②

③

④

⑤

⑥

⑦

⑧

⑨

① Inner Dia

② Quality Level
S = Standard
I = Industrial

③ Number of power wires

④ Number of signal wires

⑤ Flange
00
01
..07

⑥ Flange Position
O = No Flange
R = Rotor
I = Interior
S = Stator

⑦ Rotor cable length
O = 300mm
1 = 600mm
2 = 1200mm
X = Custom

⑧ Stator cable length
O = 300mm
1 = 600mm
2 = 1200mm
X = Custom

⑨ Special Options
01CAN = CanOpen
01ECT= Ethercat
01PRO = Profibus
01ETH = Giga Ethernet
IP65 = IP65
IP68 = IP68

In accordance with our policy of continual product improvement, A2V reserves the right to amend the specification of these products without prior notification